

Directions

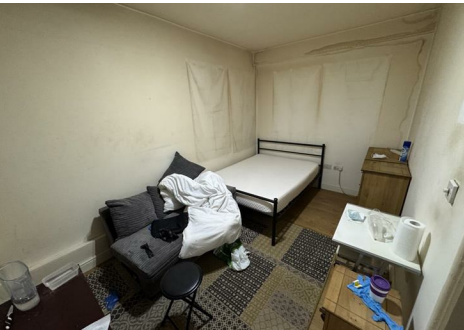
Viewings

Viewings by arrangement only. Call 02087436444 to make an appointment.

EPC Rating

C

Energy Efficiency Rating		
	Current	Potential
Very energy efficient - lower running costs		
(92 plus) A		
(81-91) B		
(69-80) C	78	79
(55-68) D		
(39-54) E		
(21-38) F		
(1-20) G		
Not energy efficient - higher running costs		
England & Wales	EU Directive 2002/91/EC	



6A, 6A Gunnersbury Avenue, Ealing, London, W3 9BD

£1,400 Per Calendar Month

- Spacious one-bedroom flat
- Currently being redecorated
- Modern fitted kitchen
- Bathroom with modern fittings
- Council Tax Band: C
- Close to Acton Town tube
- Bright reception room
- One double bedroom
- EPC Rating: C
- Ideal for commuters

6A Gunnersbury Avenue, London W3 9BD

Nestled in the vibrant area of Ealing, this spacious one-bedroom flat on Park Parade, Gunnersbury Avenue, offers an ideal living space for those seeking convenience and comfort. Perfectly situated just a short stroll from Acton Town tube station, this property provides excellent transport links to central London, making it an attractive option for commuters.

As you enter the flat, you are welcomed into a bright reception room that serves as a perfect space for relaxation or entertaining guests. The room is currently undergoing redecoration, ensuring a fresh and modern feel upon completion. The fitted kitchen is well-equipped, providing all the necessary amenities for culinary enthusiasts.

The property features a generously sized double bedroom, offering a peaceful retreat at the end of the day. The bathroom is functional and well-maintained, catering to all your daily needs.

With an EPC rating of C, this flat is not only stylish but also energy-efficient, making it a sensible choice for environmentally conscious individuals. The council tax band is C, which is reasonable for the area.

In summary, this one-bedroom flat is an excellent opportunity for anyone looking to enjoy the benefits of city living in a comfortable and well-connected environment. Whether you are a first-time buyer or seeking a rental property, this flat is sure to impress.

1

1

1

C

Council Tax Band: C